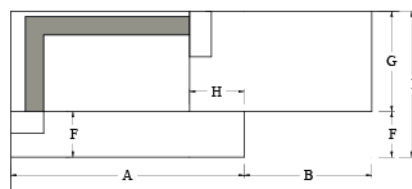
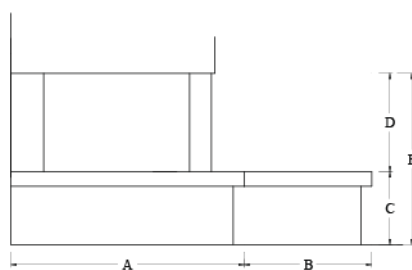




LIVING

Disponibile di serie per i seguenti focolari: DS 70 TGH - DS 90 TGH - DS 100 TGH - DS 70 REF - DS 90 REF - DS 100 REF

In foto soglia inferiore, panca e spallette realizzate in Ceramica Metallo Oxide; Sotto-grado con supporto di serie da rifinire e verniciare in opera.



	A	B	C	D	E	F	G	H	I
DS 70	108	70	40	54	94	25	55	30	80
DS 90	128	70	40	54	94	25	55	30	80
DS 100	138	70	40	52	92	25	65	30	90

DISPONIBILE DI SERIE NEI SEGUENTI MATERIALI

CERAMICA



Calacatta Oro



Metallo Corten



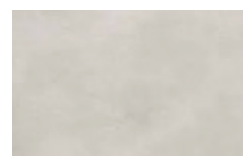
Materia Land



Cemento Avorio



Metallo Oxide



Materia Salt



Cemento Grigio



Metallo Perla



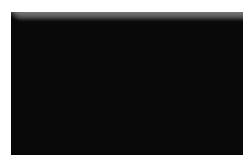
Materia Stone



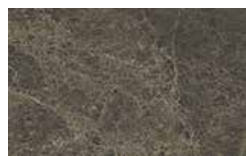
Cemento Nero



Nero Atene



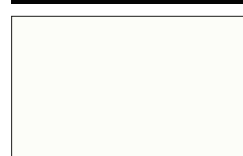
Nero Opaco



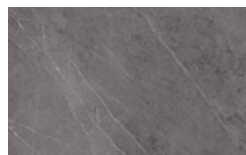
Emperador



Nero Gold



Bianco Opaco



Grafite



Ossido Moro

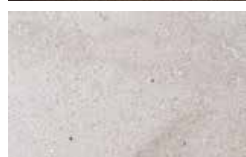
PIETRA NATURALE



Ardesia a spacco



Wengè satinato



Maljat lucido